

Panorama at the
Lille Stadium control center

References



Atos



STAPLES



MOËT & CHANDON
CHATEAUNEUF

BRIDGESTONE

EuroAirport
BASEL MULHOUSE FREIBURG



Culture / Entertainment / Tourism : Rome Auditorium • Lyon Library • Barrière Casino • Hotel Cité-Concorde - Plaza - Sheraton • Arab World Institute • Maison de Radio France • Louvre Museum • Sydney Opera • Palais de Tokyo • ICEO Calais Swimming Pool • Bercy Sports Center • RTBF Belgique • Lille Stadium • Montrouge Theater

Datacenters : Atos • Betfair • Mobistar • Orange

Energy / Environment : Carrier • CEA • CRAM • EDF • GDF Suez • Suez Environnement

Retail : Carrefour • Decathlon • Hyper U • Ikea • JPG • Leclerc • Manutan • Staples USA

Industry : Bridgestone • Goodyear • Kimo • LBC • Merck • Moët & Chandon • Papeterie de Bègles • PSA • Sanofi • Snecma • Tarkett • Thyssen Krupp • Turbomeca • Valeo

Health : IRE (National Institute of Radioelements) • Orsay Protontherapy Center • University Hospitals of Amiens - Angers - Bordeaux - Chalon-sur-Saône - Clermont-Ferrand - Dijon - Lille - Meaux - Paris - Périgueux - Saint-Brieuc - Valenciennes

Corporate headquarters and branch offices : Alstom transport • Atos • Banque de France • Casino • CIC Crédit Mutuel • ETDE • Société Générale • Aérospatiale • Infogrammes • Le Parisien

National / Regional government organizations : Assemblée Nationale • CAF de Lyon • Caisse des dépôts et consignation • Regional municipality of Bordeaux • General Councils of several French departments (54-59-89-92) • DCN • DGA • Ecole des Mines • Fleury Mérogis Penitentiary • La Poste • Bordeaux City Hall - Montpellier - Colmar - Dijon - Rouen • Parking garages of Monaco - Belfort - Dijon - Montbéliard • European Parliament • Paris Fire Dept. • Syctom • UFR de Pau • University of Orleans - Toronto

Transportation : Airports of Basel-Mulhouse - Toulouse-Blagnac - Lille-Lesquin - Los Angeles - Paris - Charleroi • Air France • APRR • Angers Tramway Warehouse • Subway systems in Paris - London - Marseille - Lisbon • RER • SNCF

Codra Software Limited

960, Capability Green - Luton - Bedfordshire - LU1 3PE - UK

Tel : + 44 (0)1582 635040 - Fax : + 44 (0)1582 635001

E-Mail : sales-panorama@codra.fr - <http://uk.codra.net>

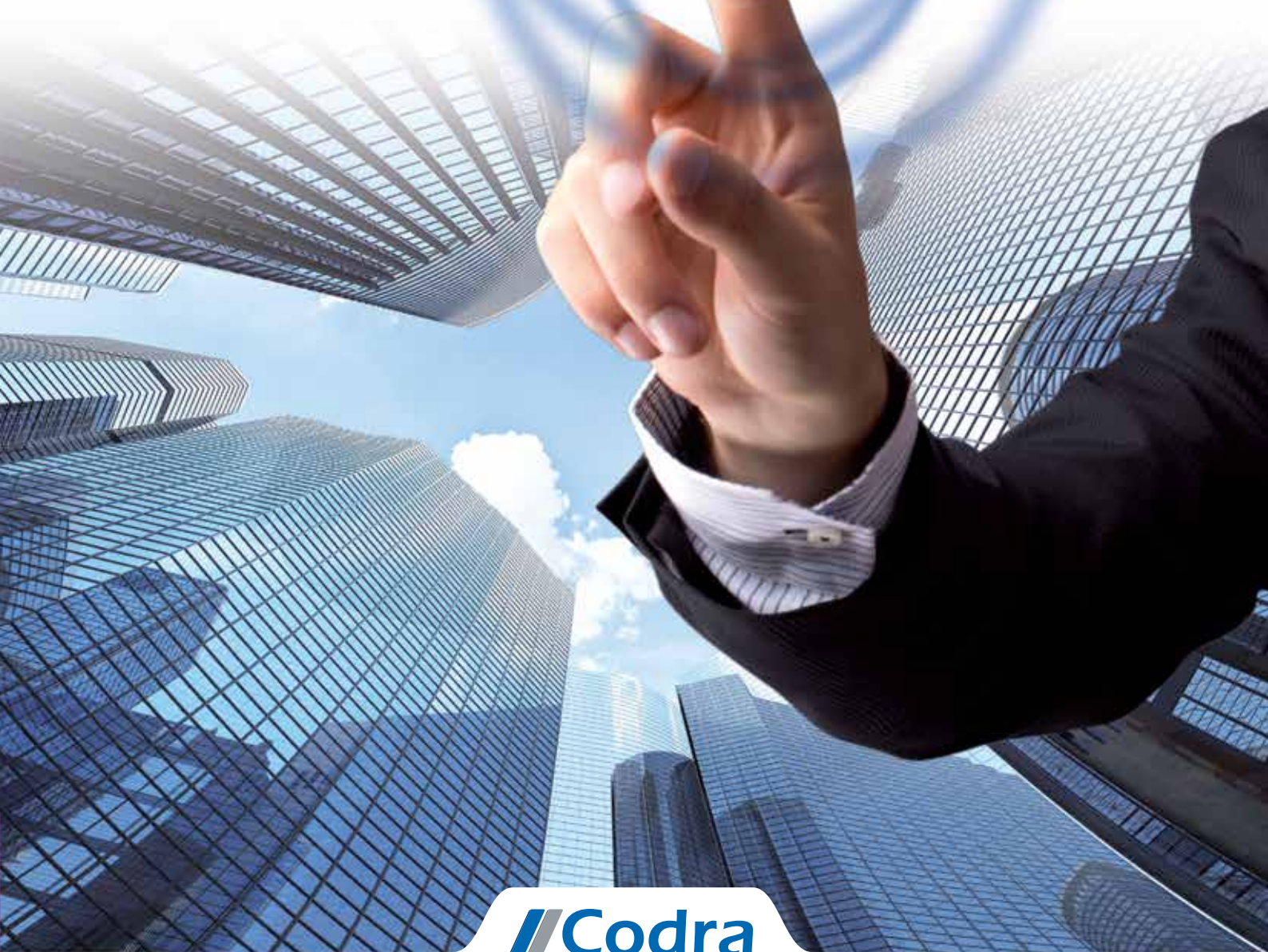
The information in this document is provided for information only and is not binding. Codra reserves the right to change the document at any time without warning.

All brands are the property of their respective owners.

Royalty license : Meta Productique / SNCF / Lille Stadium © 2013

Panorama 

BMS & FM





Panorama E² installed
in La Défense near Paris



Facilities Management (FM) and Building Management Systems (BMS) involve an increasing number of items to process and supervise. Real-time visualization of this data must be intuitive to ensure efficient daily use. Codra has extensive knowledge of FM/BMS based on over 20 years' experience and expertise with Panorama E².

Multi-site, multi-function hypervision to unite your applications

Panorama E² provides unified access to all your applications: air conditioning, heating, CCTV, intrusion protection, access control, ticket machines, consumption management (water, electricity, gas), technical equipment management (PLC cabinets, electrical power, etc.), fire detection, lighting, messaging (highways, tunnels, traffic information, etc.).

Vendor-independent

Panorama E² implements methods based on industry standards and norms, thereby enabling communications with a wide range of products.

Application protocols

Interfaces with LON, KNX, DALI, Modbus, etc. and native BACnet integration. BACnet uses network discovery to configure network objects;

you can also use EDE to import device configuration files. Panorama manages all BACnet services and includes ready-to-use supervision objects: you can create an operational application in just a few clicks.

Alert systems

New standard Panorama E² functions manage distribution of alert messages over various channels including email, voice messages, text messages, and fax.

On-call management

The scheduling and personnel management module provides intuitive, visual ergonomics to accurately organize your teams.

Energy efficiency

One of the key challenges facing our generation is the control of our energy usage. Panorama IT meets your requirements by providing indi-

cators, reports, and "RT 2012 Ready" yield and consumption tracking.

A wide range of installations

Panorama E² is the ideal solution for your facilities, whether they are simple (video protection), small (100 variables), large (>50k variables), or critical (datacenters, defense).

Used by thousands of clients

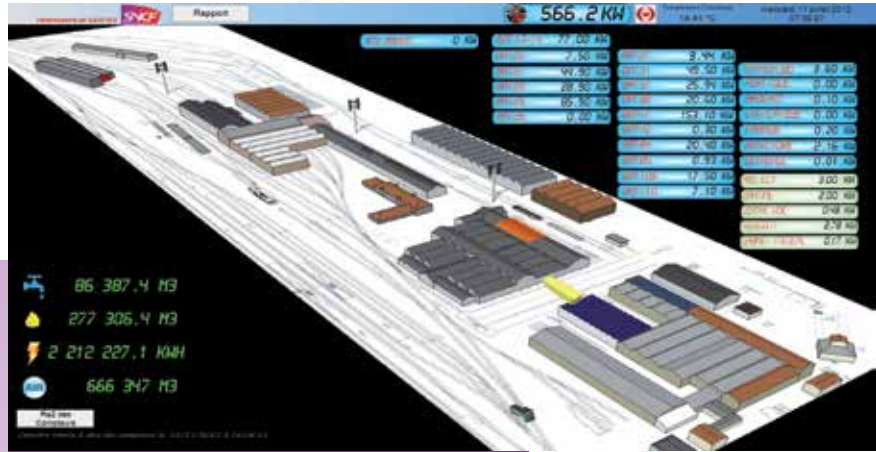
Stadiums, museums, parking garages, datacenters, subway lines, buildings, head offices, shopping centers, warehouses, distributed sites... In order to adapt to market demand, we continually enhance Panorama functions and services based on customer feedback.



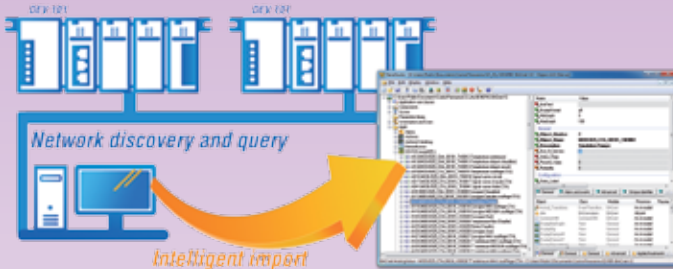
Panorama E²: a universal tool for combining and integrating your FM/BMS applications



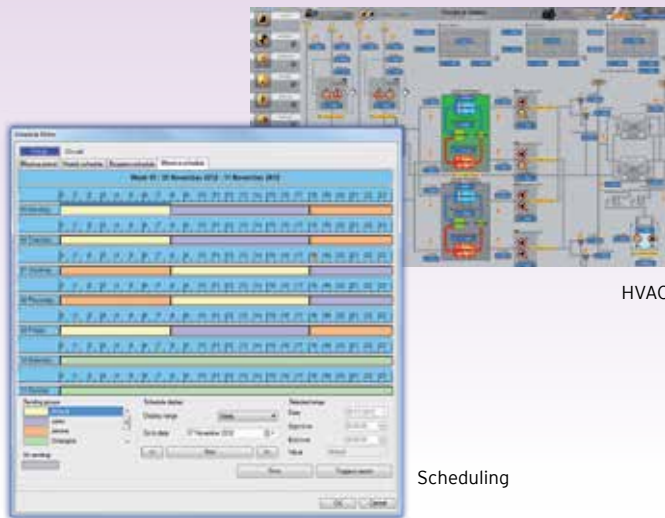
SNCF
Technicenter in Saintes



Intuitive configuration with BACnet :
greatly lowers your development
and maintenance costs



Panorama creates fully-operational functions ranging from data acquisition to alarm management, scheduling, and even mimics, by combining the discovery of your plant components with our automatic SCADA generation mechanism.



HVAC

Scheduling

All the functions required to supervise and control your facilities :

- > Data acquisition, alarms, data history,
- > Mimics, trend drawings, scheduling,
- > Alerts, and on-call management,
- > Integration of CCTV, access control, intrusion protection,
- > Reports for improved plant administration,
- > Native SNMP support for network and system management,
- > Redundancy, load balancing.

Powerful, automatic tools for application creation and maintenance.

Implementation of unlimited system architectures, from stand-alone workstations to multi-server systems with multi-level redundancy.

Seamless integration with your enterprise information system :

- > Link to your user directory,
- > Computer center running on a virtual machine,
- > Connections with centralized databases.

Remote access via mobile terminals (tablets, smartphones).

breeam



Hotel management in Courchevel